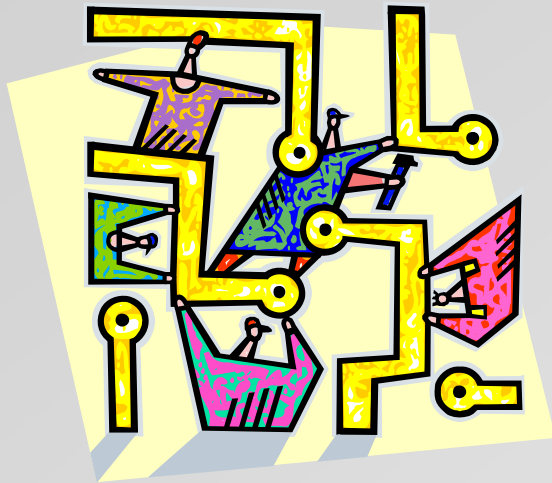


IMPLEMENTING A COLLABORATIVE TASK IN dotLRN WEB-BASED LEARNING ENVIRONMENT



Alberto Bayón
Olga C. Santos
Jesús G. Boticario



aDeNu Research Group <http://adenu.ia.uned.es>

- Objectives

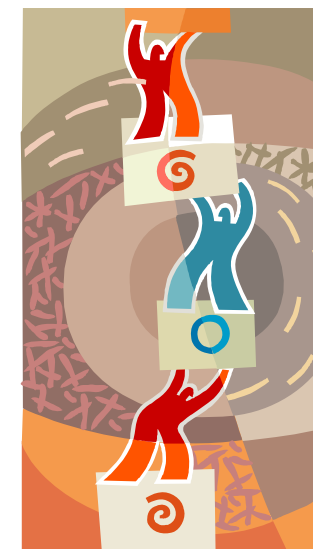
- LFA experience

- Methodology

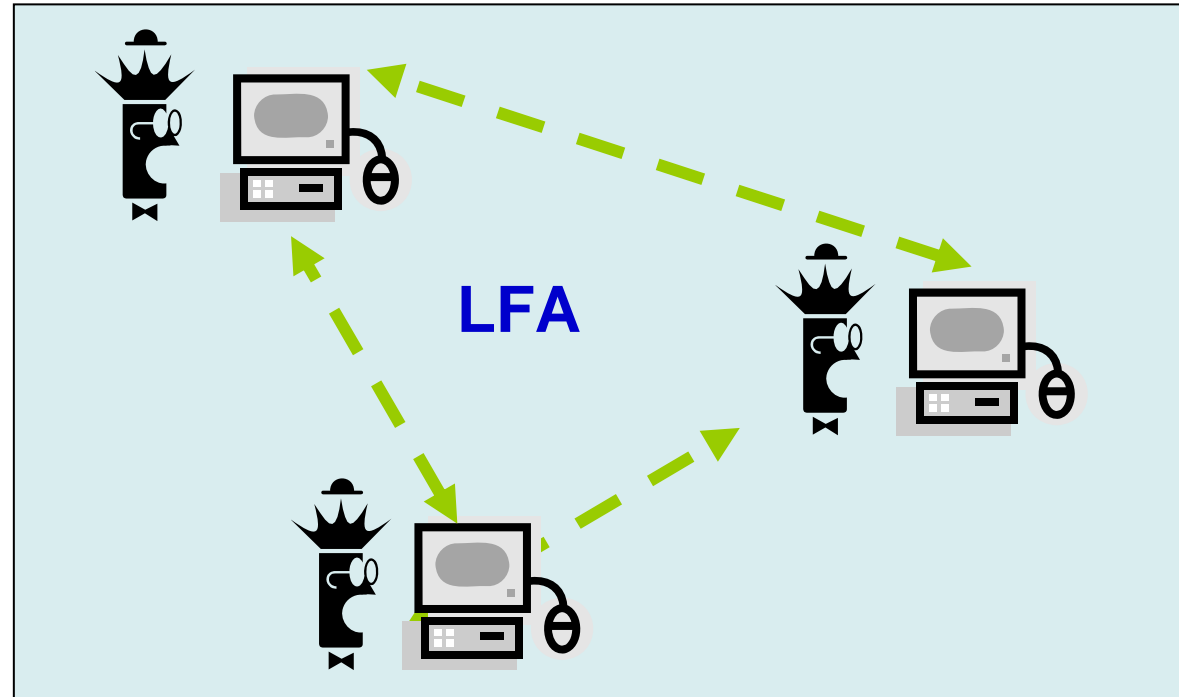
- Architecture

- Implementing

- Real collaboration Methodology
 - Involve students
- Intelligent systems (iLMS)
 - Improve effectiveness of the learning process
 - Adapting responses to students' needs
- Context to implement the collaborative LFA extension

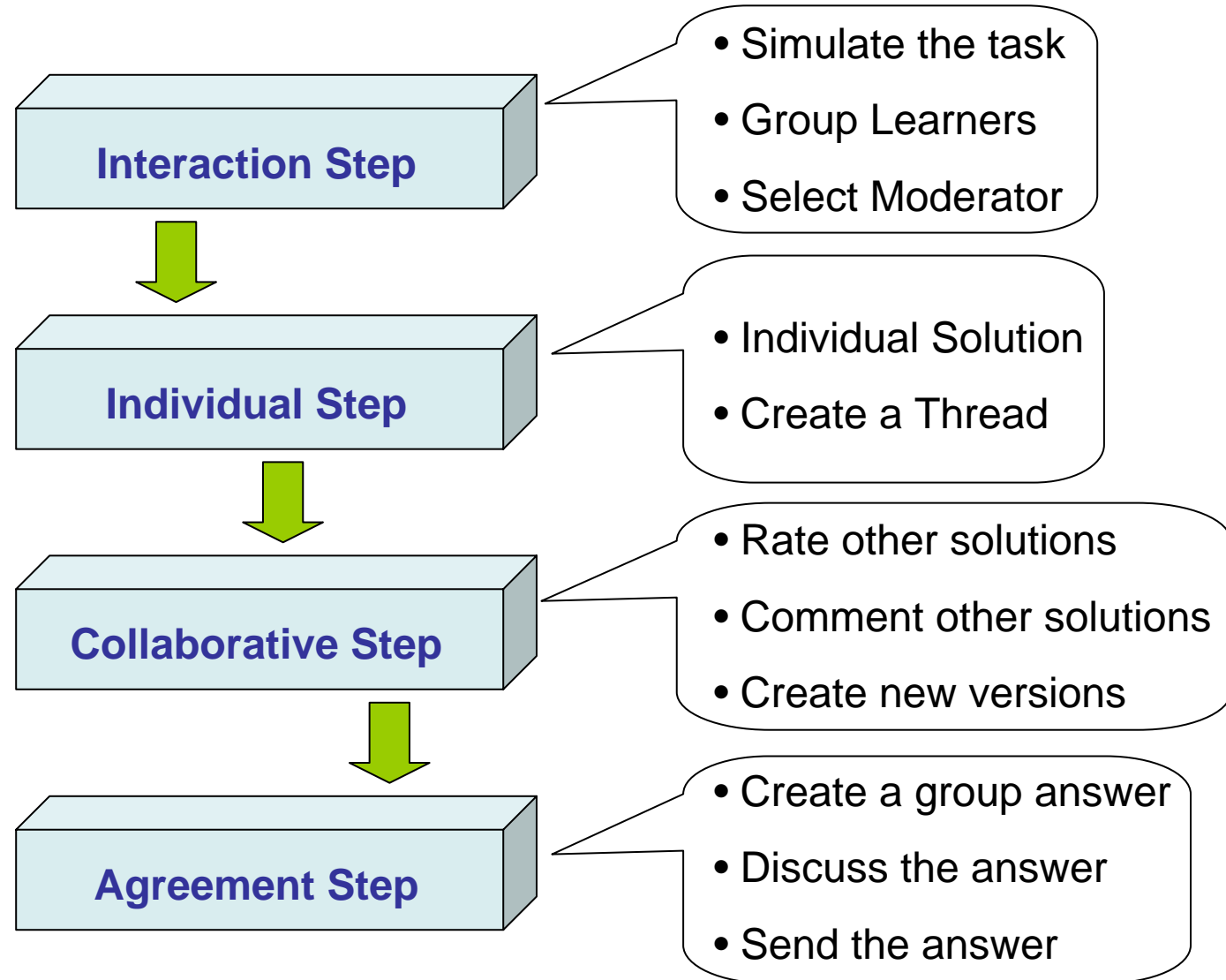


- Objectives
- LFA experience
- Methodology
- Architecture
- Implementing

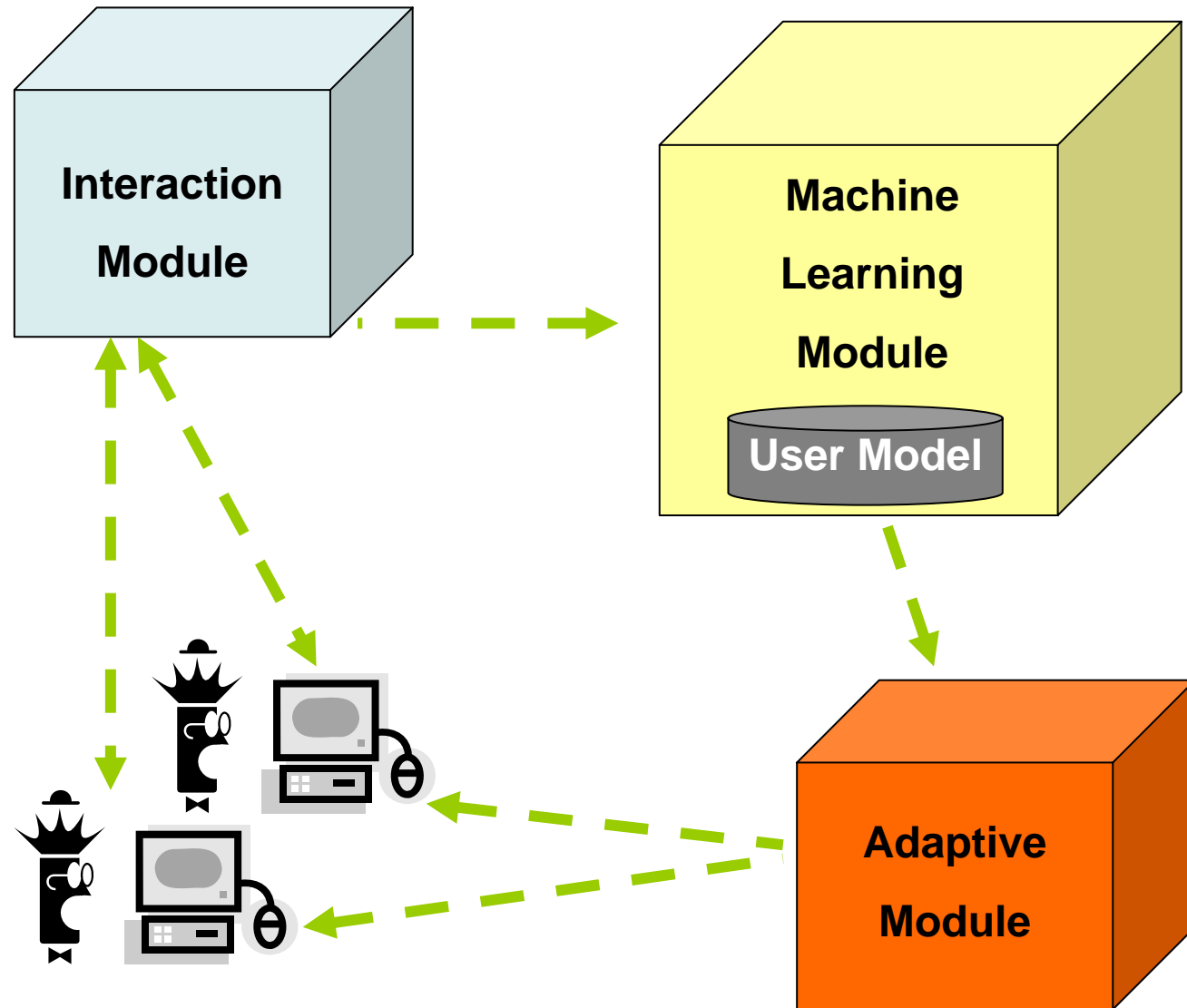


- Achievements **LFA PERFORMING**
- Unresolved **REAL COLLABORATION**

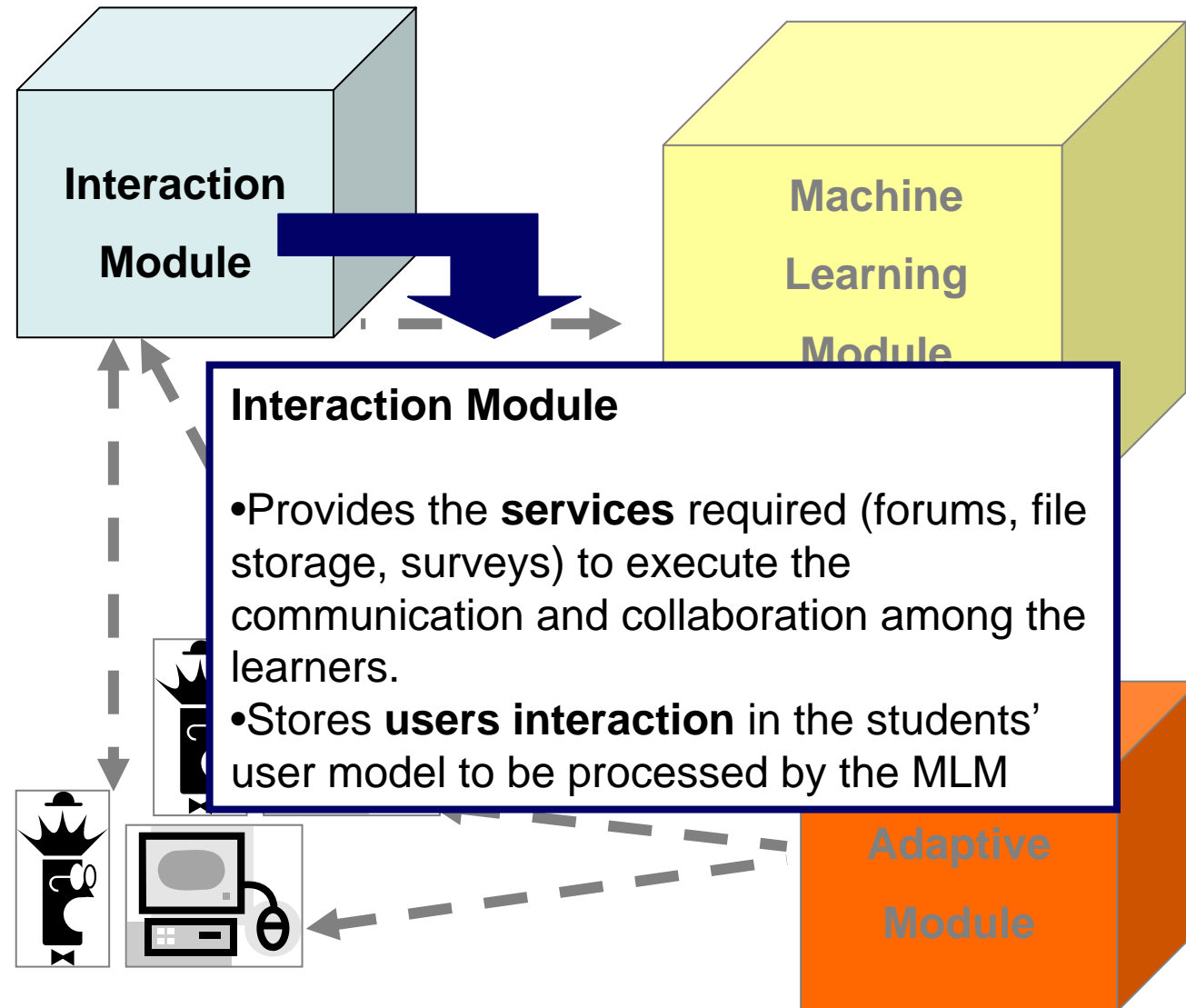
- Objectives
- LFA experience
- **Methodology**
- Architecture
- Implementing



- Objectives
- LFA experience
- Methodology
- **Architecture**
- Implementing



- Objectives
- LFA experience
- Methodology
- **Architecture**
- Implementing



- Objectives

- LFA experience

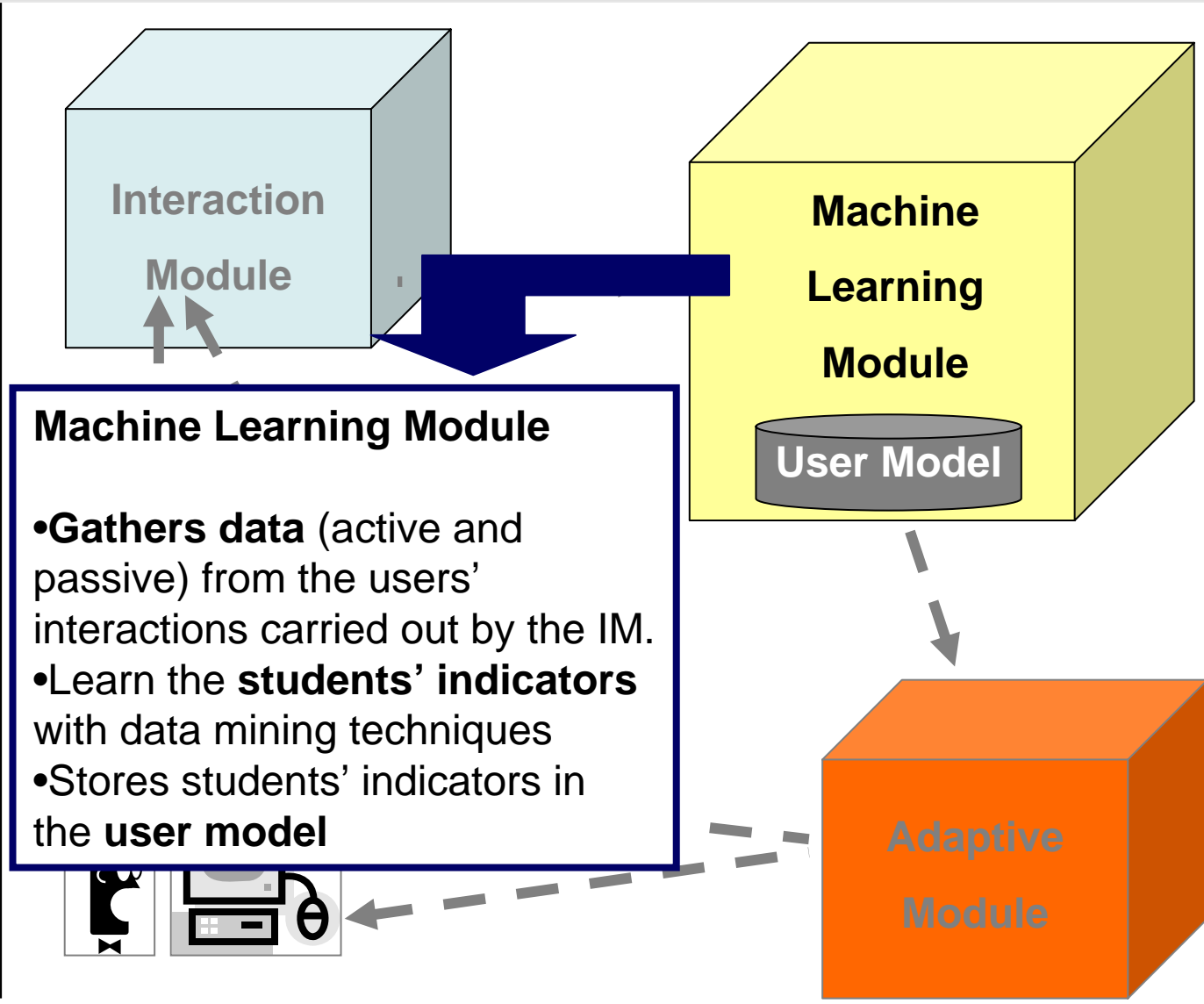
- Methodology

- Architecture

- **Implementing**

- Provides the collaborative environment
- Offer communications tools
 - forums, chats, e-mail, common file storage areas, etc.
- Manages the collaborative task
 - Creation of surveys
 - Creation of groups
 - Assignment of permissions to learners
 - make visible the responses of the others students when defined
 - Rating others students' responses

- Objectives
- LFA experience
- Methodology
- **Architecture**
- Implementing



- Objectives

- LFA experience

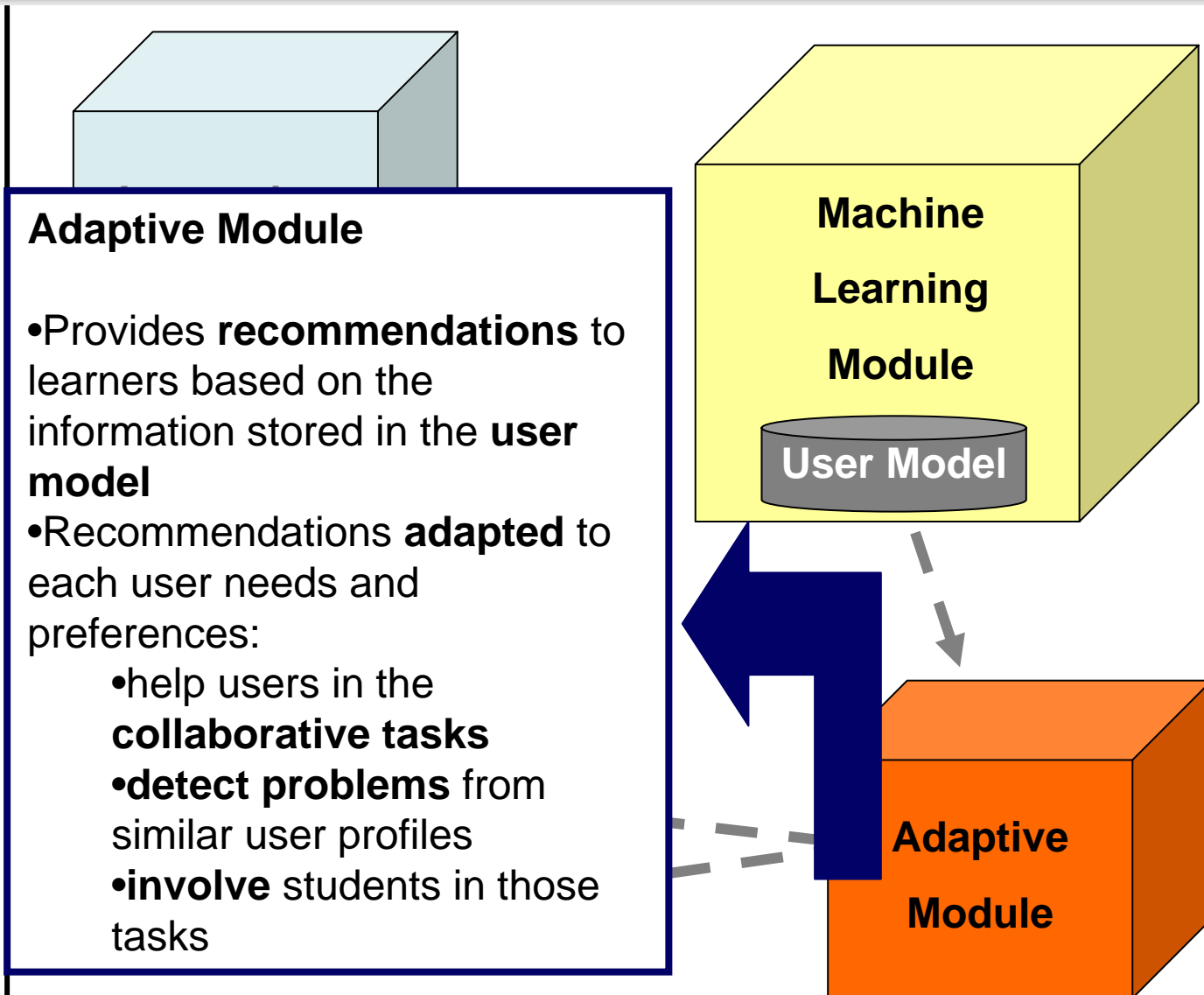
- Methodology

- Architecture

- Implementing

- Indicators:
 - measure the interactions of the collaboration
 - *User profile*
 - participative, insightful, useful, non-collaborative, student with initiative or communicative student.
 - *Data come form*
 - *Forums structure:*
 - *thread's* wideness and deepness, number of student who take part in each discussion, the threads in which a student takes part, if a new reply is sent always after a specific user contribution ...
 - *Solution versions:*
 - number of rejected versions, number of version of each student, the length of the discussion when the student decide to create a new version ...
 - *Ratings:*
 - Evolution of the survey in rating terms, if the discussion thread improves the rate or make rates worst, the most frequent value used by a user ...
 - *Reading of messages:*
 - what does a student do after reading a message?, what is the order of a student for reading messages in the forum?, what does a student do while preparing the answer?, ...

- Objectives
- LFA experience
- Methodology
- Architecture
- Implementing



- Objectives

- LFA experience

- Methodology

- Architecture

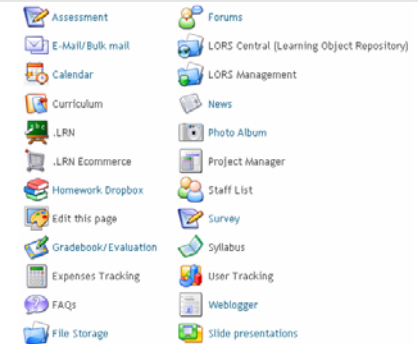
- **Implementing**

- Provides the collaborative environment
- Offer communications tools
 - forums, chats, e-mail, common file storage areas, etc.
- Manages the collaborative task
 - Creation of surveys
 - Creation of groups
 - Assignment of permissions to learners
 - make visible the responses of the others students when defined
 - Rating others students' responses

- Objectives
- LFA experience
- Methodology
- Architecture
- Implementing



- Based in previous aDeNu Project for LFA
- Methodology for real collaboration
 - Phases managed by roles and permissions:
- dotLRN for Interaction Module
 - Subgroups
 - Forums
 - File storage
 - User Tracking
 - Cops for ratings
- Machine Learning & Data Mining:
 - Weka software



Thank you!

Any questions?



aDeNu Research Group <http://adenu.ia.uned.es>